

**TARRAWARRA
MUSEUM
OF ART**

PROJECT PARTNER

**ARTS
PROJECT
AUSTRALIA** | **50**
YEARS

EXHIBITION SUPPORTER



Intimate Imaginaries



This is an Easy Read resource about the exhibition Intimate Imaginaries

Exhibition information



- Intimate Imaginaries is a group show featuring 13 artists from Arts Project Australia.



- This show opens on Saturday 30 November and closes on Monday 10 March 2025.



- This show will be held at TarraWarra Museum of Art.



- TarraWarra Museum of Art is in Healesville.
-

Exhibition information



- This show has paintings, sculptures drawings and videos.



- This show has art by Fulli Andrinopoulos, Samraing Chea, Alan Constable, Wendy Dawson, Bronwyn Hack, Julian Martin, Chris O'Brien, Lisa Reid, Anthony Romagnano, Mark Smith, Cathy Staughton, Georgia Szmerling and Terry Williams.



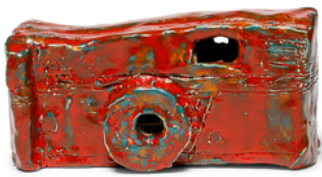
- This show is curated by Anthony Fitzpatrick.



- The images on the left are of some of the artworks in the show.
-

About the artist

Alan Constable



- Alan Constable was born in Australia in 1956.

- Alan joined Arts Project Australia in 1991.



- Alan makes ceramics, paintings and drawings.

- Alan is inspired by cameras, birds, cars and animals.

- Alan started making cameras using cardboard when he was a kid.



- The images on the left are some of Alan's ceramics in the show.
-

About the artist

Anthony Romagnano



- Anthony Romagnano was born in Australia in 1985.
- Anthony joined Arts Project Australia in 2004.



- Anthony makes drawings, digital artworks and paintings.
- His artworks look like mosaics or stained glass windows.



- Anthony is inspired by people he knows, magazines and popular culture.
 - The images on the left are some of Anthony's drawings in the show.
-

About the artist

Bronwyn Hack



- Bronwyn Hack was born in Melbourne in 1979.

- She joined Arts Project Australia in 2011.



- Bronwyn makes paintings, ceramics, prints, soft-sculptures, textiles and zines.



- Bronwyn makes art about people, animals and the body.

- The images on the left are some of Bronwyn's works in the show.
-

About the artist

Cathy Staughton



- Cathy Staughton was born in 1968.
- She joined Arts Project Australia in 1989.



- Cathy makes paintings about her experiences and the places and people in her life.
- She combines her memories with her imagination to make her artworks.



- Cathy is also inspired by technology and robots.
 - The images on the left are some of Cathy's paintings in the show.
-

About the artist

Chris O'Brien



- Chris O'Brien was born in Melbourne in 1981.

- Chris joined Arts Project Australia in 2002.

- Chris makes paintings, prints, sculptures, zines and animations.



- Chris is inspired by the people and places in his life, especially old houses.

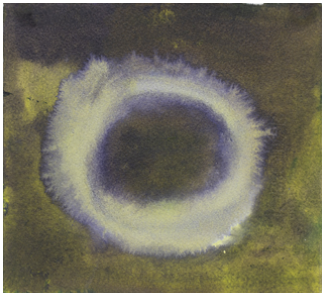
- The works made by Chris in Intimate Imaginaries are about an old house in Northcote called Monavale.



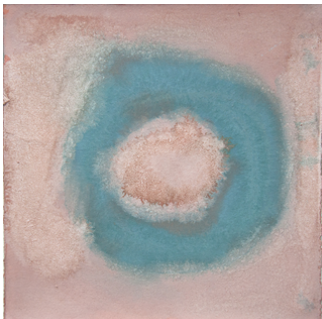
- The images on the left are some of Chris' works in the show.
-

About the artist

Fulli Andrinopoulos



- Fulli Andrinopoulos was born in Melbourne in 1965.
- Fulli joined Arts Project Australia in 1991.



- Fulli makes paintings with ink, gouache, acrylic paint and pastel.

- Recently Fulli has been using embroidery to create her artwork.



- Fulli makes her artwork using repeated circular shapes.

- The images on the left are some of Fulli's paintings in the show.
-

About the artist

Georgia Szmerling



- Georgia Szmerling was born in 1979.
- Georgia joined Arts Project Australia in 2003.



- Georgia makes ceramics, drawings, paintings, photographs, murals and videos.
- Georgia is inspired by nature.



- Georgia uses lots of bright colours and lines when making her ceramics and paintings.
 - The images on the left are some of Georgia's paintings in the show.
-

About the artist

Julian Martin



- Julian Martin was born in Melbourne in 1969.
- Julian joined Arts Project Australia in 1988.



- Julian makes abstract drawings using pastels.
- In abstract artworks objects or figures do not look the same in real life as they do in the artworks.



- Julian is inspired by photographs and objects from his life.
 - The images on the left are some of Julian's drawings in the show.
-

About the artist

Lisa Reid



- Lisa Reid was born in Melbourne in 1975.

- Lisa joined Arts Project Australia in 2002.



- Lisa makes ceramics, paintings, zines, drawings, prints and animations.

- Lisa is inspired by memories of her childhood, family photos and objects from her past.



- Lisa's artworks tell stories about her family and her personal history.

- The images on the left are some of Lisa's works in the show.
-

About the artist

Mark Smith



INTIMATE IMAGINARIES



- Mark Smith was born in 1976.
 - Mark joined Arts Project Australia in 2007.
 - He makes soft sculptures, ceramics, prints, paintings, photographs and videos.
 - Mark's work explores what it means to be human.
 - In Mark's soft-sculptures and ceramics his chosen words express different emotions or common phrases.
 - The images on the left are some of Mark's works in the show.
-

About the artist

Samraing Chea



- Samraing Chea was born in 1995.

- Samraing joined Arts Project Australia in 2011.



- Samraing makes drawings.

- Samraing is inspired by politics, animals, pop culture and the people and places around him.



- Samraing's drawing are in the style of comics. Each drawing has a written caption.

- The images on the left are some of Samraing's drawings in the show.

About the artist

Terry Williams



- Terry Williams was born in Australia in 1952.

- Terry joined Arts Project Australia in 1989.



- Terry makes his soft sculptures using fabric scraps and stuffing. He sews them together by hand using a needle and thread.

- Terry makes art about people, animals, science fiction and everyday objects.



- The images on the left are some of Terry's soft-sculptures in the show.
-

About the artist

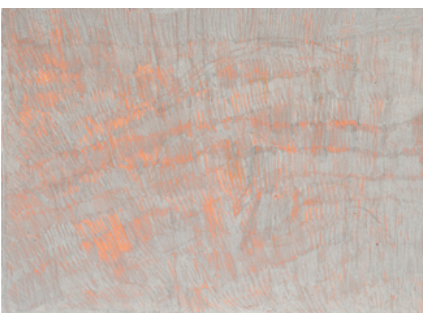
Wendy Dawson



- Wendy Dawson was born in Australia in 1950.
- Wendy joined Arts Project Australia in 2008.



- Wendy makes drawings on paper.
- Wendy makes her drawings using pen, paint and markers.



- She marks the paper with repeated lines to create patterns and layers.
 - The images on the left are some of Wendy's drawings in the show.
-

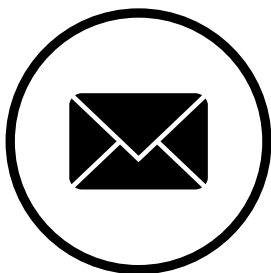
For more information



Visit our website for more updates
www.twma.com.au



Follow us on instagram
@tarrawarraMA



Email: **museum@twma.com.au**



Call: **(03) 5957 3100**
